

## Advanced Biotechnology Park at SUNY Downstate Medical Center



**SUNY Downstate Medical Center**  
**760 Parkside Avenue**  
**Brooklyn, NY 11203**  
<http://research.downstate.edu/incubator.htm>

Size: 24,000 SF (2,230 m<sup>2</sup>)

Average Rent: \$26 triple-net / sf

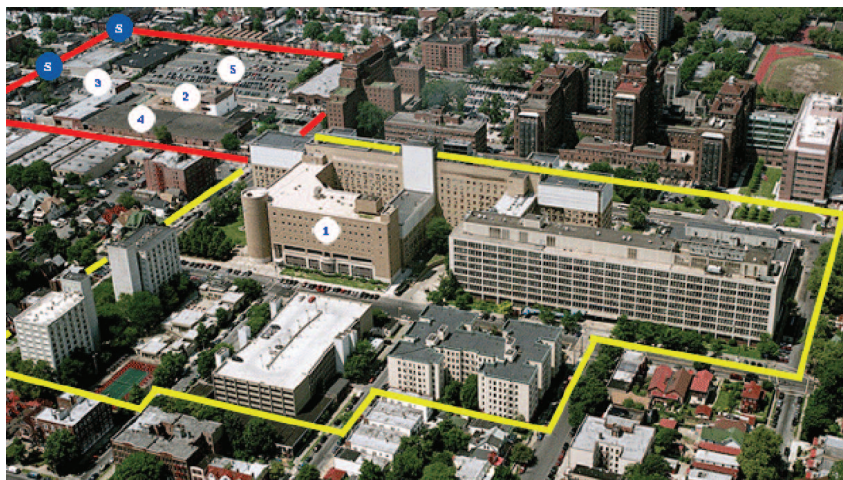
Contact: Dr. Eva Cramer  
Vice President for Biotechnology &  
Scientific Affairs  
(718) 270-1011  
[ecramer@downstate.edu](mailto:ecramer@downstate.edu)

### Incubator Facilities:

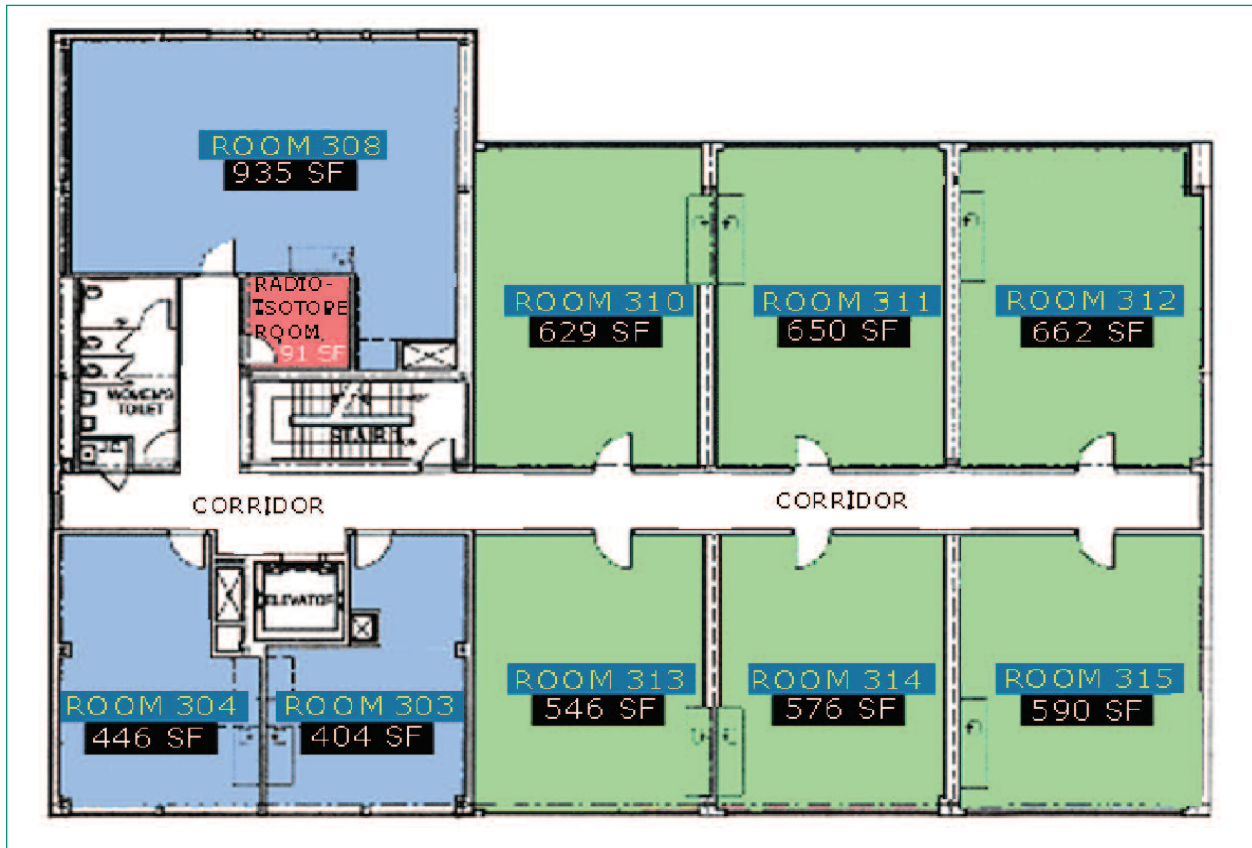
- Piping, ductwork and other requirements for gas, vacuum and fume hoods
- Equipment room (autoclave, centrifuge, glass washer, ice machine, etc.)
- Emergency generator
- Conference room
- Wired for high speed data/telecommunications
- Parking

### Access to Downstate Resources

- Basic and clinical scientists
- Graduate and MD/PhD students
- Medical and scientific library
- Clinical trials, Animal facilities
- Specialized research facilities and equipment
- Radioactive material acquisition and disposal
- Seminars
- Conference rooms
- Amenities include a cafeteria and exercise facilities

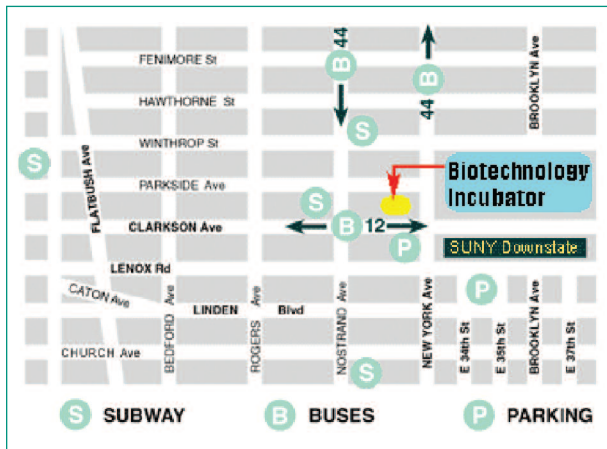


- ① SUNY Downstate Medical Center
- ② Advanced Biotechnology Incubator
- ③ Commercial Chemistry Facility
- ④ Future Site
- ⑤ Future Site



## Incubator Floor Plan

3rd Floor



## Location

Conveniently located near the 2 & 5 subways and the B-12 and B-44 buses